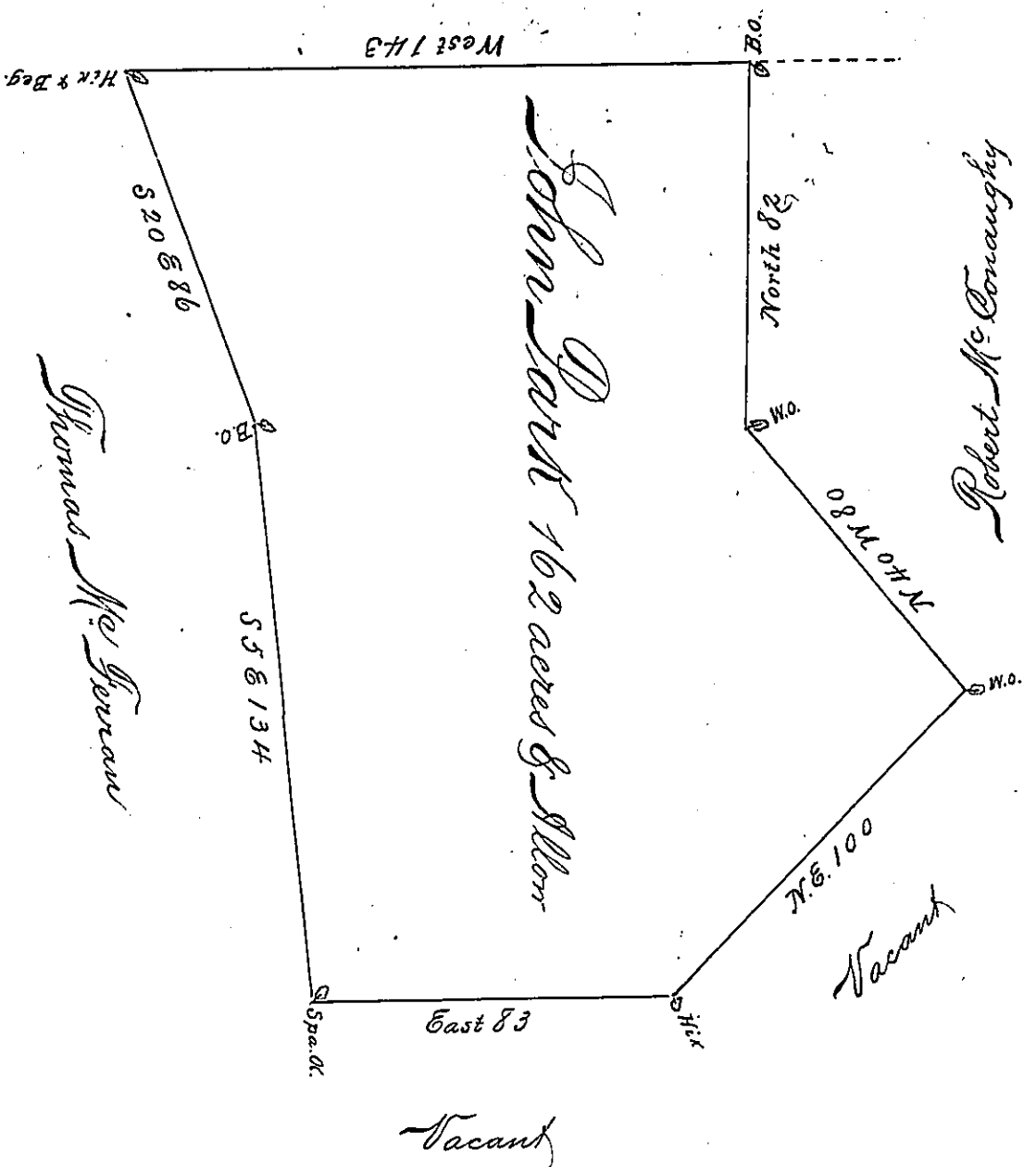


Edward Bennett



A Draught of a Tract of Land situate in Men-
 allen Township in the County of York (late
 part of the County of Lancaster) containing one
 Hundred & sixty two Acres and the Allowance
 of Six Acres per Cent for Roads & High Ways.
 Surveyed by Thomas Cookson, Esq^r late Deputy
 Surveyor of Lancaster County the 15th Day of
 October 1745 for John Park, in pursuance of
 a Warrant bearing date the 24th of May 1745
 Protracted & Calculated from the Field Book
 p Geo Stevenson one of the
 Exors of Tho^s Cookson Deed
 To W^m Parsons, Esq^r Sur^r Gen^l

IN TESTIMONY that the above is a copy of the original remaining on file in the
 Department of Internal Affairs of Pennsylvania, made con-
 formably to an Act of Assembly approved the 16th day of
 February, 1833, I have hereunto set my Hand and caused
 the Seal of said Department to be affixed at Harrisburg, this
 third day of March 1896.

James Whatta
 Secretary of Internal Affairs.